

**Covered Booth Definition** – To place something over or upon an exhibit or portion of an exhibit (e.g., roof, ceiling, tenting, lattice, fabric, plastic) to cover the ground level and/or support decorative structures. The upper portion of a “covered” exhibit is not occupiable.

**Multi-Level Booth Definition** – To construct a level or tier atop an exhibitor or portion of an exhibit, to be occupied by one (1) or more persons.

## A. Guidelines for Covered Exhibits With Less Than Three Hundred (300) Covered Square Feet

- 1) All materials used in the construction of covered exhibits and all decorative materials within the exhibit must be non-combustible or limited combustible (flame-retardant) materials. Certification of flame retardant treatment, along with samples of said materials, must be submitted, if requested by Orange County Fire Rescue Services Department. It is recommended certifications of flame retardant treatments be available at show site. Exhibitor must install a single station and battery operated smoke detector on the interior of each covered exhibit or structure regardless the square footage. The detector must sound an audible alarm and be installed per the manufacturer’s instructions.
- 2) Exhibitor must provide at least one (1) 2-A, 10-BC portable, dry chemical fire extinguisher. Fire extinguisher(s) must be mounted in a visible location and be accessible at all times.

## B. Guidelines for Multi-level Exhibits (regardless the size) and Covered Exhibits With Larger Than Three Hundred (300) Covered Square Feet

Requests for construction of multi-level (regardless the size) or covered exhibits (larger than 300 square feet) must be reviewed by the OCCC Event Management department and Orange County Fire Rescue Services Department. To ensure success of your exhibit, please read and comply with the following guidelines:

- 1) Plans should be submitted before exhibit construction begins and must adhere to the following:
  - a. They must be scaled, signed and dated by a registered architect or engineer.
  - b. They must include the show name and dates.
  - c. They must include exhibitor’s name and assigned booth number.
  - d. They must include directional information (i.e. indicate neighboring aisles and/or booth numbers).
  - e. They must indicate maximum exhibit height, within the booth. Height guidelines are established, per event, by show management. Refer to the Exhibitor’s Manual for applicable guidelines.
  - f. They must include the rise and tread of the stairs.
  - g. They must include the guard rail measurements.
- 2) Send two (2) copies of scaled, signed and dated blue prints (with front and side elevations), by a registered architect or engineer, to:

Orange County Convention Center  
Attn: Event Management  
**Regular Mail:** PO Box 691509, Orlando, FL 32869  
**Overnight:** 9860 Universal Boulevard, Orlando, FL 32819

- 3) All materials used in the construction of multi-level and/or covered exhibits and all decorative materials within the exhibit must be non-combustible or limited combustible (flame-retardant) materials. If requested, certification of flame-retardant treatment, along with samples of said materials, must be submitted to Orange County Fire Rescue Services Department. It is recommended certifications of flame retardant treatments be available at show site.
- 4) The upper deck of multi-level exhibits, if larger than three hundred (300) square feet, shall meet the following requirements:
  - a. Upper level may not have a “cover” of any kind (e.g., roof, ceiling, tenting, lattice, fabric and plastic).
  - b. Exhibits with an enclosed room or occupied second story must post notice at the bottom of the stairway, indicating maximum permitted occupancy (or total permitted weight load of the second level).

- c. If second level is to be occupied and greater than three hundred (300) square feet, two (2) stairways are required, remote from each other. If second level is to be occupied and less than three hundred (300) square feet, one (1) set of stairs is permitted. All stairs must be a minimum of three feet (3') in width, equipped with a handrail on at least one (1) side and constitute a "straight run" or be "squared off." Spiral stairs or winders are not permitted.
- d. Individual areas of upper decks or covered areas must be limited to dimensions that do not exceed one thousand (1,000) square feet.
- e. If the upper deck, or covered area, is greater than one thousand (1,000) square feet, a clear fire break (unobstructed aisle), of not less than ten feet (10') must be provided on all four (4) sides of each one thousand (1,000) foot area. To avoid transfer of fire to another area, the firebreak (unobstructed aisle) shall not contain displays, furniture, or other materials.
- f. The ten foot (10') clear space may be spanned by an overhead bridge or canopy which must not exceed four feet (4') in width. The bridge or canopy must be constructed of non-combustible materials.
- g. Exhibitor must install a single station and battery operated smoke detector on the interior of each covered exhibit or structure regardless the square footage. The detector must sound an audible alarm and be installed per manufacturer's instructions
- h. Exhibitor must provide a portable, dry chemical fire extinguisher for each level or each covered exhibit or structure. At least one (1) 2-A, 10-BC portable type fire extinguisher must be provided for each three hundred (300) square feet. Fire extinguishers must be mounted in a visible location, near exit doors, and be accessible at all times.

### C. Required Fire Watch Personnel

Orange County Fire Rescue Services Department requires firewatch personnel for:

- ALL multi-level exhibits (regardless of the square footage) and
- All other covered exhibits exceeding three hundred (300) square feet.

The exhibitor is required to order firewatch personnel through the OCCC Event Management department no less than two (2) weeks before the show moves in. Firewatch is required:

- a. For ALL multi-level exhibits (regardless of the square footage) and all other covered exhibits exceeding three hundred (300) square feet.
- b. On all show days
- c. Beginning one half (1/2) hour prior to show opening and ending one half (1/2) hour following show closing. Fire watch personnel are charged at the prevailing rate.
- d. To place order, contact: the OCCC Event Management department. Phone: (407) 685-9882 Fax: (407) 685-9866

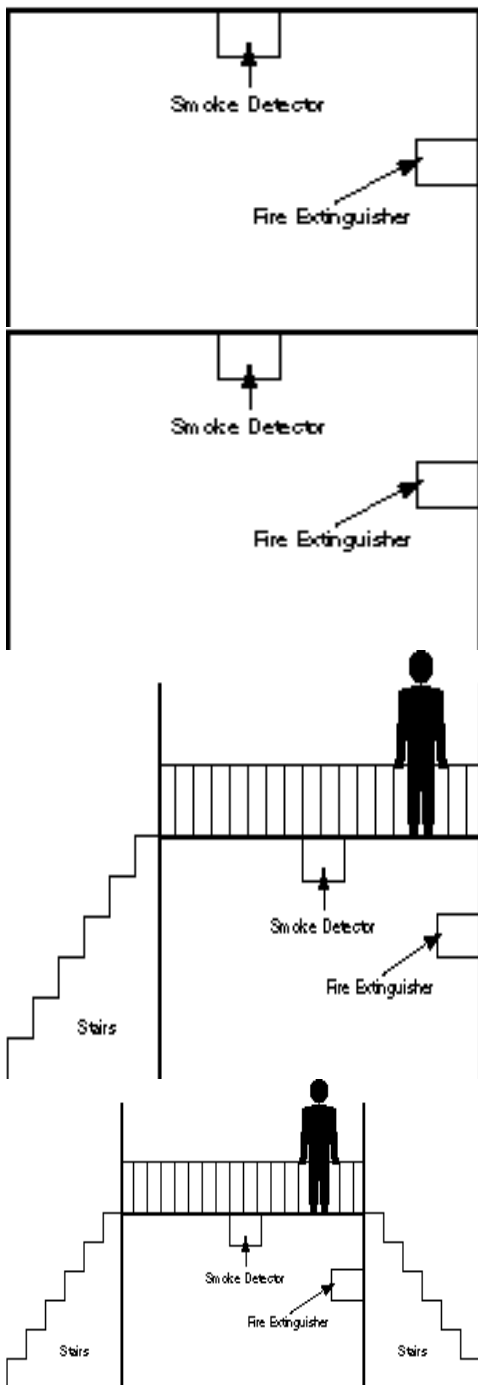
### D. Alternative to Fire Watch Personnel (Automatic Extinguishing System)

This alternative to fire watch personnel applies to the first level of exhibits with an occupiable second level, regardless the size and/or single-story covered exhibits where the covered area exceeds three hundred (300) square feet.

- 1) Automatic sprinkler systems must be designed in accordance with N.F.P.A. 13 1991 Edition.
- 2) These systems may be connected to the Convention Center's existing standpipe system and in some cases, the domestic water supply. Connections to water systems must be made by the Orange County Convention Center.
- 3) Extinguishing system designs must be part of the original plan submissions. Orange County Fire Rescue Services Department requires permitting and testing.
- 4) Exhibits or structures protected by an automatic extinguishing system must have flow alarm, audible and visual, within that area. This alarm is to be a local type, sounding in the vicinity of the exhibit or structure.
- 5) Exhibitor must install at least one (1) single station, battery operated smoke detector on the interior of each covered exhibit or structure regardless the square footage. The detector must have an audible alarm and be installed per the manufacturer's instructions.
- 6) Exhibitor must provide a portable, dry chemical fire extinguisher for each level or each covered exhibit/structure. At least one (1) 2-A, 10-BC portable type fire extinguisher must be provided for each three hundred (300) square feet. Fire extinguishers must be mounted in a visible location, near exit doors, and be accessible at all times.

If you have questions regarding these [guidelines](#), contact:  
Event Management  
Orange County Convention Center  
Phone: (407) 685-9882  
Fax: (407) 685-9866

If you have questions regarding [Fire Code](#), contact:  
Orange County Fire Rescue Services Department  
Phone: (407) 685-9811  
Fax : (407) 685-9866



### Covered Exhibits

299 sq. ft. or less

- Firewatch or Extinguishing System Not Required
- **All Booths to be Constructed as Required by Applicable Codes and Standards**

### Covered Booth, Tent and Theatre

300 sq. ft. to 1,000 sq. ft. - maximum allowed

- Firewatch or Extinguishing System Required
- All Booths to be Constructed as Required by Applicable Codes and Standards

### Multi-Level Exhibits

299 sq. ft. or less

- Firewatch or Extinguishing System Required
- Minimum 1 Stair Required
- All Booths to be Constructed as Required by Applicable Codes and Standards

### Multi-Level Exhibits

300 sq. ft. to 900 sq. ft. - maximum allowed

- Firewatch or Extinguishing System Required
- Minimum 2 Stairs Required
- All Booths to be Constructed as Required by Applicable Codes and Standards

**MULTI-LEVEL & COVERED  
 BOOTH APPLICATION**

**EVENT:**   MegaCon 2018  

**EXHIBITING COMPANY:** \_\_\_\_\_

**NAME OF EAC / DESIGN FIRM:** \_\_\_\_\_

**CONTACT NAME:** \_\_\_\_\_

**PHONE:** \_\_\_\_\_ **FAX:** \_\_\_\_\_

**CONTACT EMAIL:** \_\_\_\_\_

**SQUARE FOOTAGE OF BOOTH/EXHIBIT:** \_\_\_\_\_

**SQUARE FOOTAGE OF COVER:** \_\_\_\_\_

**STAIR RISE & TREAD:** \_\_\_\_\_ **GUARD RAIL MEASUREMENTS:** \_\_\_\_\_

**BOOTH #:** \_\_\_\_\_

**BOOTH SIZE:** \_\_\_\_\_ **X** \_\_\_\_\_

**BOOTH TYPE:**

MULTI-LEVEL     COVERED

**I AM:**

THE EXHIBITOR

AN EAC/I&D: \_\_\_\_\_

OTHER: \_\_\_\_\_

**COMMENTS:**

*Please consult the OCCC Multi-Level & Covered Booth Guidelines in your exhibitor kit for complete information regarding multi-level and covered booths. All booths must be constructed as required by all applicable codes and standards.*

Orange County Fire Rescue Department requires firewatch personnel for:

- All multi-level booths and exhibits regardless of square footage, unless a sprinkler system is installed
- All other covered booths and exhibits exceeding three hundred (300) square feet.

**COVERED BOOTH, EXHIBITS, TENT & THEATRE DEFINED:** To place something over or upon an exhibit or portion of an exhibit (e.g., roof, ceiling, tenting, lattice, fabric, plastic) to cover the ground level and/or support decorative structures. The upper portion of a “covered” exhibit is not occupiable.

- Covered Booth/Exhibits 299 square feet or less: Firewatch not required
- Covered Booth/Exhibits 300 - 1000 square feet (maximum): Firewatch REQUIRED

**MULTI-LEVEL BOOTH DEFINED:** To construct a level or tier atop an exhibit or portion of an exhibit, to be occupied by one (1) or more persons.

- Multi-Level Booth/Exhibits 299 square feet or less: Firewatch and one (1) stair REQUIRED
- Multi-Level Booth/Exhibits 300 - 900 square feet (maximum): Firewatch and two (2) stairs REQUIRED

**TO BE COMPLETED BY OCCC AND ORANGE COUNTY FIRE MARSHALL**

**EVENT MANAGER:** \_\_\_\_\_

**OCCC RECEIVED:** \_\_\_\_\_ **NUMBER OF COPIES:** \_\_\_\_\_

**DATE TO FIRE MARSHALL:** \_\_\_\_\_ **DATE RETURNED:** \_\_\_\_\_

**PLANS REVIEWER:** \_\_\_\_\_

**APPROVED:**

YES     NO

**FIREWATCH REQUIRED:**

YES     NO

**COMMENTS:**